



Hepworth Court, 30 Gatliff Road  
London SW1W

GARTON JONES.COM

# Hepworth Court, 30 Gatliff Road London, SW1W

## £640,000 Leasehold

GARTON JONES.COM

8 Gatliff Road  
Grosvenor  
Waterside  
Chelsea  
London  
SW1W 8DP

Sales +44 (0) 20 7730 5007  
gws@gartonjones.com  
www.gartonjones.com

A beautifully presented one bedroom apartment for sale of approx. 612 sq.ft (56.9 sq.m) in Hepworth Court, Grosvenor Waterside, a popular and secure residential development close to the banks of the River Thames by Chelsea Bridge. This bright apartment benefits from an open plan reception room, a kitchen with integrated appliances, luxury bathroom and a PRIVATE TERRACE. There is comfort cooling and good storage including a utility cupboard housing a washer/dryer and built in wardrobes to the master bedroom. SECURE UNDERGROUND PARKING IS INCLUDED. Residents have the use of 24-HOUR CONCIERGE and SECURITY, GYM & SPA. On-site Sainsbury's Local, crèche, coffee shop and Purple Dragon private kids' club. SLOANE SQUARE & VICTORIA station with (Gatwick Express links) are within walking distance. Battersea Park is also just a short stroll away across Chelsea Bridge. The property is also conveniently located for reaching the shops, boutiques, galleries and eateries on the famous King's Road and Elizabeth Street, Belgravia.

Available via Garton Jones on-site office at Grosvenor Waterside (underneath Bramah House).

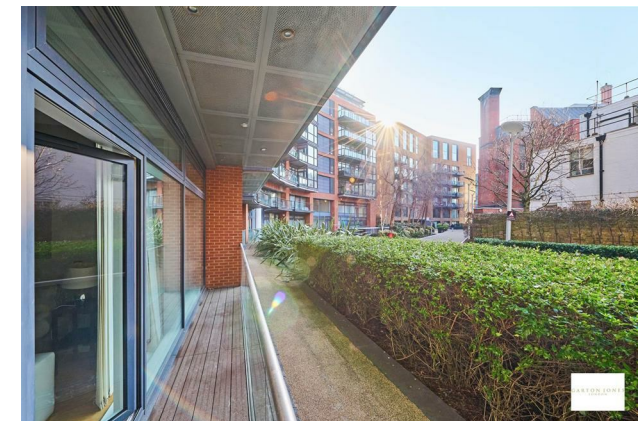
Service Charges: approx. £5744.00 (2026)  
Ground Rent: approx. £1,013.00 (2026)  
Leasehold 999 years from 2003 (expires 3002)  
EWS1 COMPLIANT

Council Tax: Westminster City Council (band F)

EPC Rating: B

EPC certificate available on request.

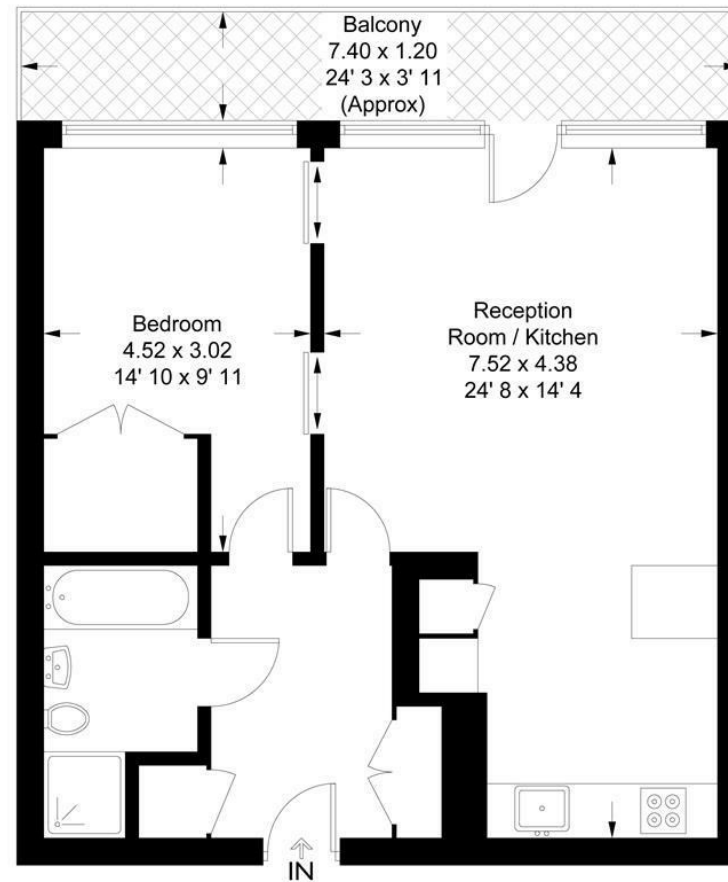
- 612 Sq.ft (56.9 Sq.m)
- 1 Bedroom Apartment
- Open Plan Reception Room
- Kitchen With Integrated Appliances
- Modern Bathroom (With Shower Cubicle & Separate Bath)
- Private Terrace
- 24 Hour Concierge & Security
- Secure Underground Parking Space
- On-Site Residents' Gym & Spa, Sainsbury's Local, Purple Dragon Private Kids Club, Crèche & Coffee Shop
- Close To Sloane Square & Victoria Station



**Hepworth Court**

Approximate Gross Internal Area = 612 sq ft / 56.9 sq m

Balcony = 96 sq ft / 8.9 sq m

GARTON JONES  
LONDON

This plan is not to scale and must be used as layout guidance only. All measurements and areas are approximate and should not be relied upon to provide accurate information. This plan must not be relied upon when making property valuations, design considerations or any other such relevant decisions. We accept no responsibility or liability (whether in contract, tort or otherwise) in relation to any loss whatsoever arising from or in connection with any use of this plan or the adequacy, accuracy or completeness of it or any information within it.





